

 *petroilko*  
PETROILKO      p e t r o i l k o

# PRODUCTION OF OIL TANKER PARTS

Developing technology that is constantly  
researched and reborn for development

## CONTENTS

### COMPANY

CEO MESSAGE	03
PATENT AND CERTIFICATION	

### PRODUCT

1.5" HOSE REEL	04
3" HOSE REEL	05
3" CHECK VALVE	06
EDUCTOR	07
WATER SLUG CONTROL	08
AIR VENT VALVE	09
SPARK ARRESTER	10
BOTTOM VALVE	11
FDF VALVE	12
TANK LEVEL GAUGE	13
VENTURI	14
CUMMING VALVE	15
VAPOR VENT	16
PETROLKO HOSE REEL	17
WATER SUPPLIER HOSE REEL	18



## CEO MESSAGE

Thank you very much for visiting Petroco.

Petroco will always work as a parts maker for tanks and cars, develop the technology that is born for development, and strive to be the company that gives more confidence to customers with the best quality. I would like to express my sincere gratitude to all those who have supported me without any encouragement and rebellion.

C.E.O Kim Gyeongsu



## PATENT AND CERTIFICATION



「Business License」



「Venture Business Confirmation」



「ISO 9001:2008」



「ISO 9001:2008」



「Certificate」



「Certificate」

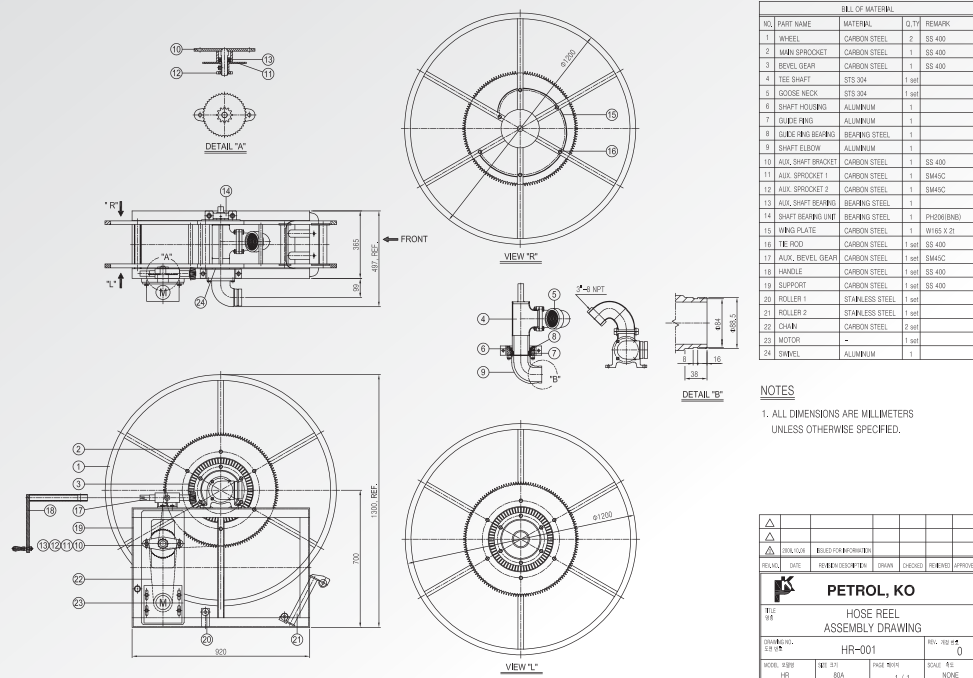


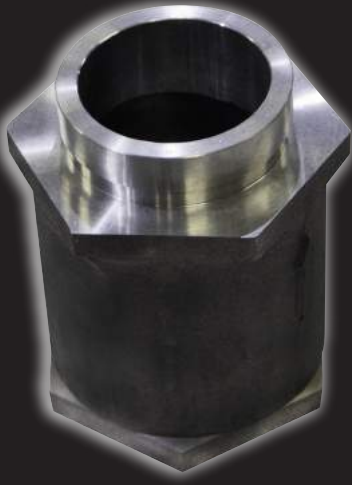


## 3" HOSE REEL

MODEL NUMBER	PKA
MANUFACTURER	PETROL,KO
AMOUNT	1 EA
MODEL NAME	3" HOSE REEL
SOURCE	PETROL,KO

- 1) It is a device for 3 "winding.
- 2) The explosion-proof motor is attached to the side, and it is operated by electric when it is wound.
- 3) Manual winding can be done by using handle when motor is faulty.
- 4) INLET is VICTAULIC COUPLING, easy to fasten and disassemble.

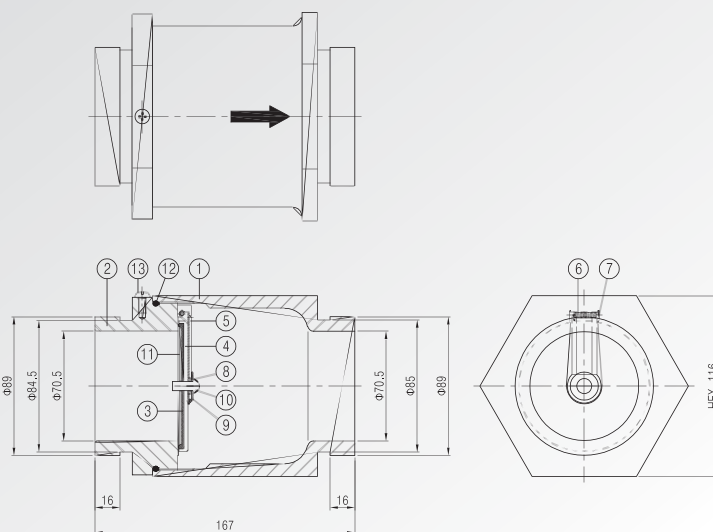




## 3" CHECK VALVE

MODEL NUMBER	PKA
MANUFACTURER	PETROL,KO
AMOUNT	2 EA
MODEL NAME	3" CHECK VALVE
SOURCE	PETROL,KO

- 1) Attached under the eductor to prevent 3 "hose drainage backflow
- 2) Prevention of backflow of fuel into main fuel tank



### NOTES

1. ALL DIMENSIONS ARE MILLIMETERS UNLESS OTHERWISE SPECIFIED.

BILL OF MATERIAL			
NO.	PART NAME	MATERIAL	Q.TY
1	BODY	ALUMINUM CASTING	1
2	SEAT	ALUMINUM CASTING	1
3	DISC	NBR	1
4	DISC HOLDER	ALUMINUM	1
5	HINGE BRACKET	STS 304	1
6	TORSION SPRING	STS 304	1
7	SPRING PIN	STS 304	1
8	BEARING RING	BRASS	1
9	RIVET WASHER	CARBON STEEL	1
10	RIVET	ALUMINUM	1
11	DISC PLATE	ALUMINUM	1
12	SEAT O-RING	NBR	1
13	POSITION BOLT	CARBON STEEL	1

△									
△									
△	2008.08.18	ISSUED FOR INFORMATION							
REV.	DATE	REVISION DESCRIPTION	DRAWN	CHECKED	REVIEWED	APPROVED			
<b>PETROL, KO</b>									
<b>CHECK VALVE ASSEMBLY DRAWING</b>									
DRAWING NO.	TCV-001						REV.	0	
MODEL	TCV	SIZE	80A	PAGE	1/1	SCALE	NONE		

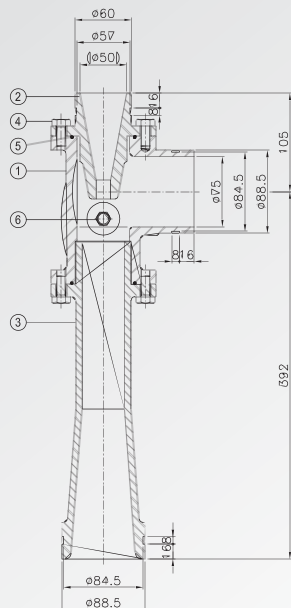




## EDUCTOR

MODEL NUMBER	PKA
MANUFACTURER	PETROL,KO
AMOUNT	1 EA
MODEL NAME	EDUCTOR
SOURCE	PETROL,KO

- 1) Equipment installed for 3 "hose drainage and deflections
- 2) Form a flow of fluid from part A to part C, increased by the speed of part D by Bernoulli's theorem, and pressure is reduced. At this time, negative pressure is applied to part B, and the oil in the 3 "hose is discharged to the tank through the tank return line.
- 3) Maintenance is unnecessary and semi-permanent.

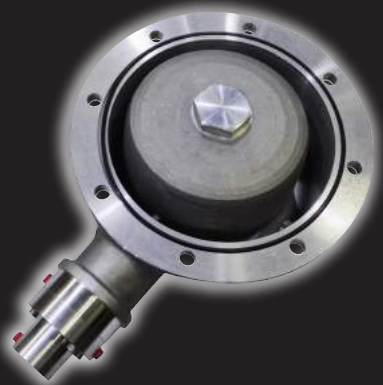


#### NOTES

1. ALL DIMENSIONS ARE MILLIMETERS UNLESS OTHERWISE SPECIFIED.

BILL OF MATERIAL				
NO.	PART NAME	MATERIAL	Q.TY	REMARK
1	BODY	ALUMINUM CASTING	1	
2	UPPER NOZZLE	ALUMINUM CASTING	1	
3	LOWER NOZZLE	ALUMINUM CASTING	1	
4	COVER BOLT	CARBON STEEL	8	SK 400 (N1007-2P200)
5	COVER O-RING	NBR	2	
6	DRAIN PLUG	BRASS	1	PT 1/4"

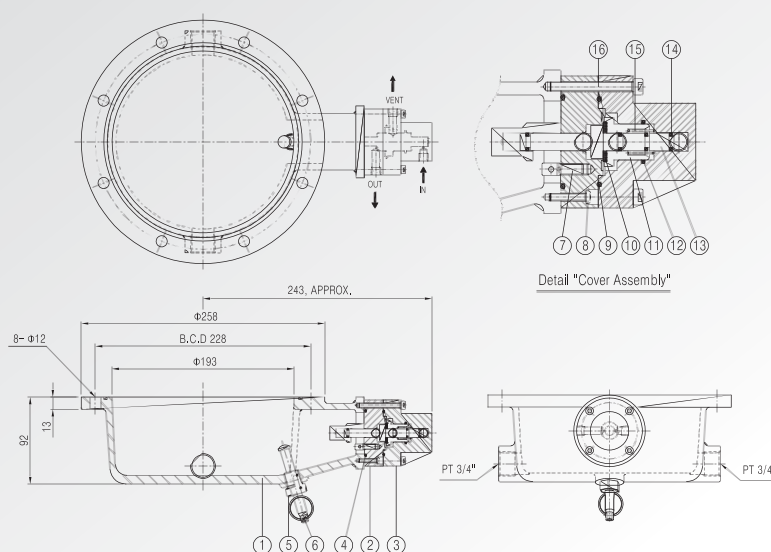
△									
△	QUALITY	ISSUED FOR INFORMATION							
REV.	DATE	REVISION DESCRIPTION	DRAWN	CHECKED	REVIEWED	APPROVED			
<b>PETROL, KO</b> 이터덕터 ASSEMBLY DRAWING									
DRAWING NO.	LJT-001			REV.	0				
MODEL	888	DATE	2/1	PAGE	2/10	SCALE	1/1	SCALE	NONE



## WATER SLUG CONTROL

MODEL NUMBER	PKA
MANUFACTURER	PETROL,KO
AMOUNT	1 EA
MODEL NAME	WATER SLUG CONTROL
SOURCE	PETROL,KO

The filter / separator is mounted at the bottom of the filter, It generates a danger signal by stopping the operation of the pressure regulating valve and generating an air signal to the air pilot valve.



### NOTES

1. ALL DIMENSIONS ARE MILLIMETERS UNLESS OTHERWISE SPECIFIED.

BILL OF MATERIAL			
NO.	PART NAME	MATERIAL	Q.TY
1	BODY	ALUMINUM CASTING	1
2	COVER SEAT	ALUMINUM	1
3	COVER	ALUMINUM	1
4	COVER SEAT O-RING	NBR	1
5	GUIDE BUSH	BRASS	1
6	FLOATING BAR	BRASS	1
7	FLOATING BOLT	STS 304	1
8	COVER SEAT BOLT	STS 304	2
9	COVER O-RING	NBR	1
10	O-RING	NBR	1
11	SPRING HOLDER	ALUMINUM	1
12	SPRING HOLDER O-RING	NBR / TEFLON	1
13	SEAT RETAINER	NBR	1
14	SEAT RETAINER O-RING	NBR	3
15	SPRING	STS 304	1
16	COVER BOLT	STS 304	4

REV.	DATE	REVISION DESCRIPTION	DESIGN	CHECKED	REVIEWED	APPROVED
1						
<b>PETROL, KO</b> <b>WATER SUMP 차폐 장치</b> <b>ASSEMBLY DRAWING</b> <b>WSS-001</b> <b>SCALE: 1:1</b>						
MODEL: WSS	REV: 01	PAGE: 001	1 / 1	SCALE: 1:1	NONE	

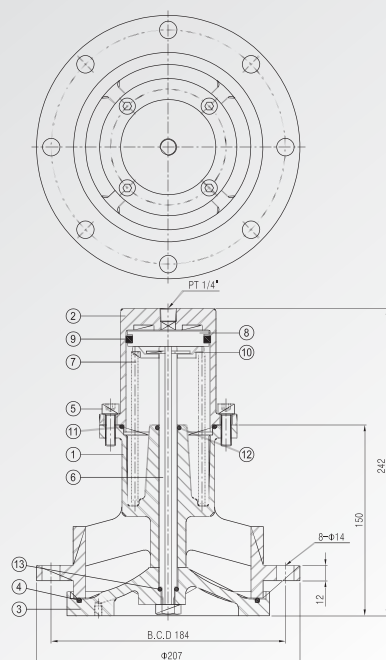




## AIR VENT VALVE

MODEL NUMBER	PKA
MANUFACTURER	PETROL,KO
AMOUNT	1 EA
MODEL NAME	AIR VENT VALVE
SOURCE	PETROL,KO

The air vent valve is opened automatically when the bottom loading operating lever is raised or when the pump is started. Single acting air actuator type



BILL OF MATERIAL			
NO.	PART NAME	MATERIAL	Q.TY
1	BODY	ALUMINUM CASTING	1
2	BONNET	ALUMINUM CASTING	1
3	DISC HOLDER	ALUMINUM CASTING	1
4	DISC O-RING	NER	1
5	BONNET BOLT	CARBON STEEL	4
6	STEM	ALUMINUM	1
7	SPRING	SPRING STEEL	1
8	PISTON	ALUMINUM	1
9	QUAD RING	NER	1
10	SPRING BEAT	ALUMINUM	1
11	BONNET O-RING	NER	1
12	STEM O-RING 2	NER	1
13	STEM O-RING 1	NER	1

### NOTES

1. ALL DIMENSIONS ARE MILLIMETERS UNLESS OTHERWISE SPECIFIED.

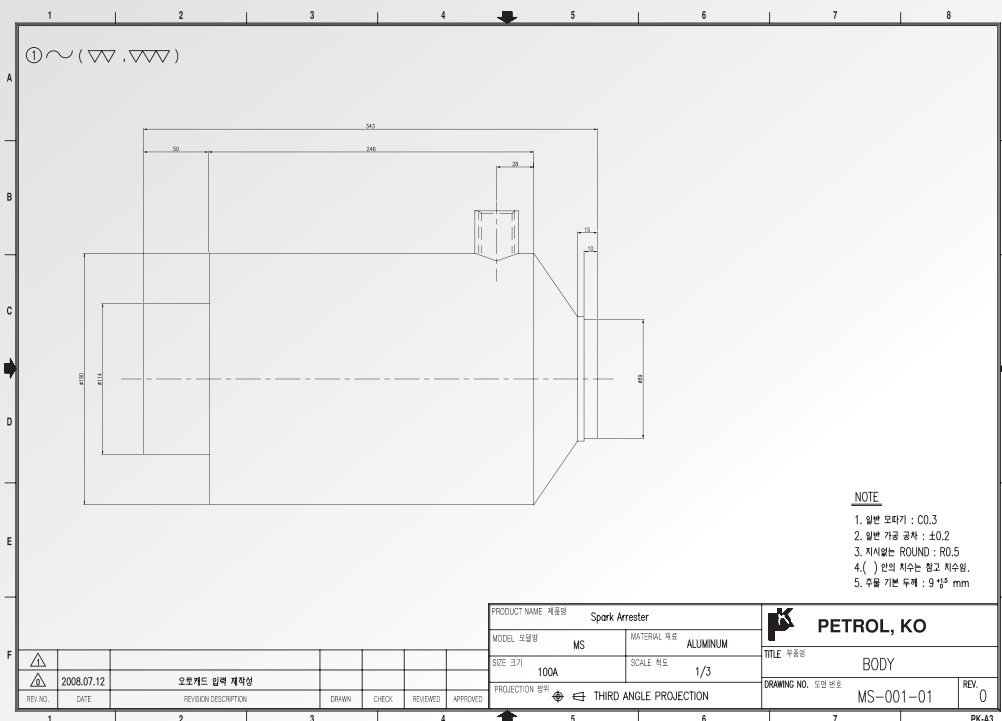
REVIS	DATE	REVISION DESCRIPTION	DRAWN	CHECKED	REVIEWED	APPROVED
PETROL, KO						
에어벤트						
ASSEMBLY DRAWING						
DESIGN NO.	AVT-001	REV. NO.	0			
MODEL NAME	AVT	REV. NO.	200A	SCALE	1/1	NONE



## SPARK ARRESTER

MODEL NUMBER	PKA
MANUFACTURER	PETROL,KO
AMOUNT	1 EA
MODEL NAME	SPARK ARRESTER
SOURCE	PETROL,KO

A device that prevents sparks that can occur during fuel injection, and is mounted beneath the front bumper of the vehicle.



# BOTTOM VALVE



MODEL NUMBER

PKA

MANUFACTURER

PETROL,KO

AMOUNT

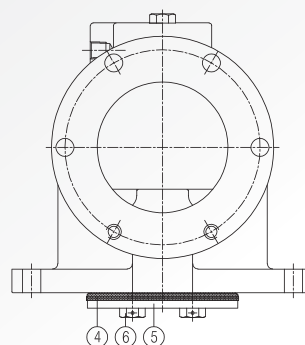
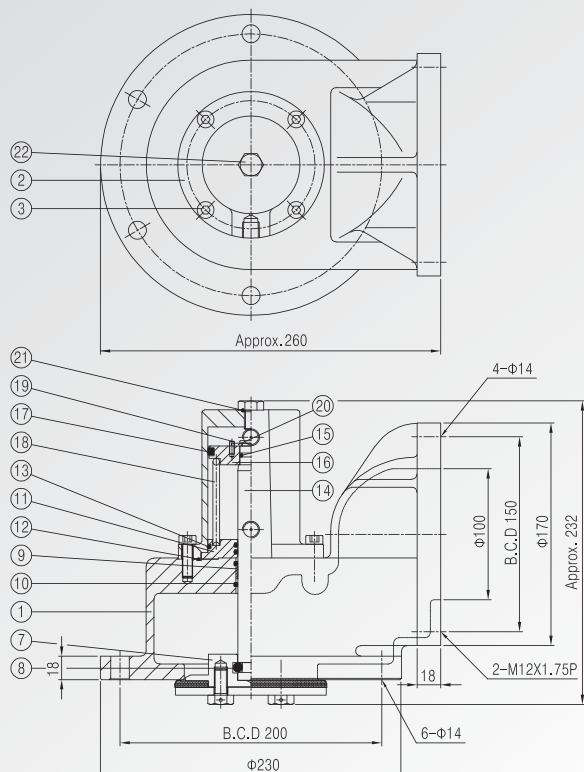
1 EA

MODEL NAME

BOTTOM VALVE

SOURCE


PETROL,KO



BILL OF MATERIAL				
NO.	PART NAME	MATERIAL	Q.TY	REMARK
1	BODY	ALUMINUM CASTING	1	
2	COVER	ALUMINUM CASTING	1	
3	COVER BOLT	CARBON STEEL	4	특정 규격 사용 필요 M8X1.25X25(LKS B1000)
4	DISC	VITON	1	
5	DISC PLATE	CARBON STEEL	1	SS 400
6	DISC BOLT	CARBON STEEL	2	SS 400
7	DISC HOLDER	ALUMINUM	1	
8	BALL	STS 304	1	
9	STEM BUSHING	CARBON STEEL	1	NITRIDED No. 2019
10	O-RING	VITON	4	G20
11	LOWER SPRING SEAT	ALUMINUM	1	
12	COVER O-RING	VITON	1	
13	SPRING SEAT O-RING	NBR	1	G70
14	STEM	ALUMINUM	1	
15	STEM O-RING	NBR	1	P14
16	UPPER SPRING SEAT	ALUMINUM	1	
17	QUAD RING	NBR	1	53.35X5.33
18	SPRING	SPRING STEEL	1	SW-C
19	STOPPER SCREW	CARBON STEEL	1	특정 규격 사용 필요 M4X0.7X10(LKS B1000)
20	STOPPER RING	STS 304	1	
21	COVER PLUG O-RING	NBR	1	P10
22	COVER PLUG BOLT	CARBON STEEL	1	SS 400 사용 필요 M10X1.5X15

## NOTES

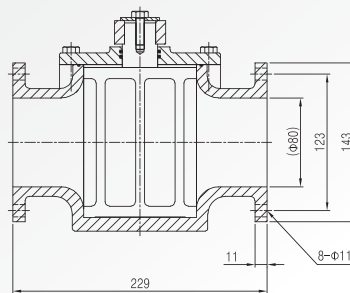
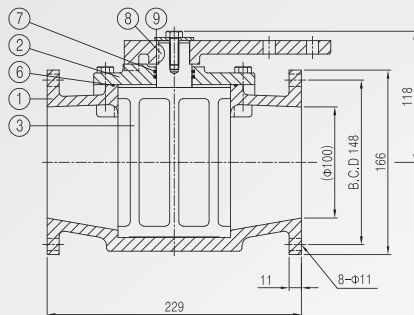
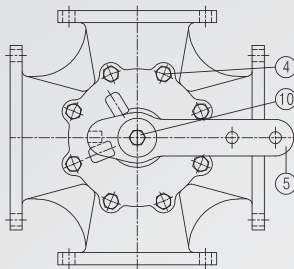
1. ALL DIMENSIONS ARE MILLIMETERS UNLESS OTHERWISE SPECIFIED.

△									
△									
△	2008.02.04	ISSUED FOR INFORMATION							
REV. NO.	DATE	REVISION DESCRIPTION	DRAWN	CHECKED	REMOVED	APPROVED			
 <div style="text-align: center;"> <h2>PETROL, KO</h2> <h3>BOTTOM VALVE ASSEMBLY DRAWING</h3> </div>									
DRAWING NO. 도면 번호		BTV-001				REV. 개수 0			
MODEL 모델명	BTV	SHEET 크기	100A	PAGE 쪽수	1 / 1	SCALE 척도	NONE		



## FDF VALVE

MODEL NUMBER	PKA
MANUFACTURER	PETROL,KO
AMOUNT	1 EA
MODEL NAME	FDF VALVE
SOURCE	PETROL,KO



BILL OF MATERIAL			
NO.	PART NAME	MATERIAL	Q.TY
1	BODY	ALUMINUM CASTING	1
2	COVER	ALUMINUM CASTING	1
3	COCK	ALUMINUM CASTING	1
4	COVER BOLT	CARBON STEEL	8
5	HANDLE	ALUMINUM CASTING	1
6	COVER O-RING	NBR	1
7	COCK O-RING	NBR	2
8	STOPPER	STS 304	1
9	HANDLE WASHER	CARBON STEEL	1
10	HANDLE BOLT	CARBON STEEL	1

### NOTES

1. ALL DIMENSIONS ARE MILLIMETERS UNLESS OTHERWISE SPECIFIED

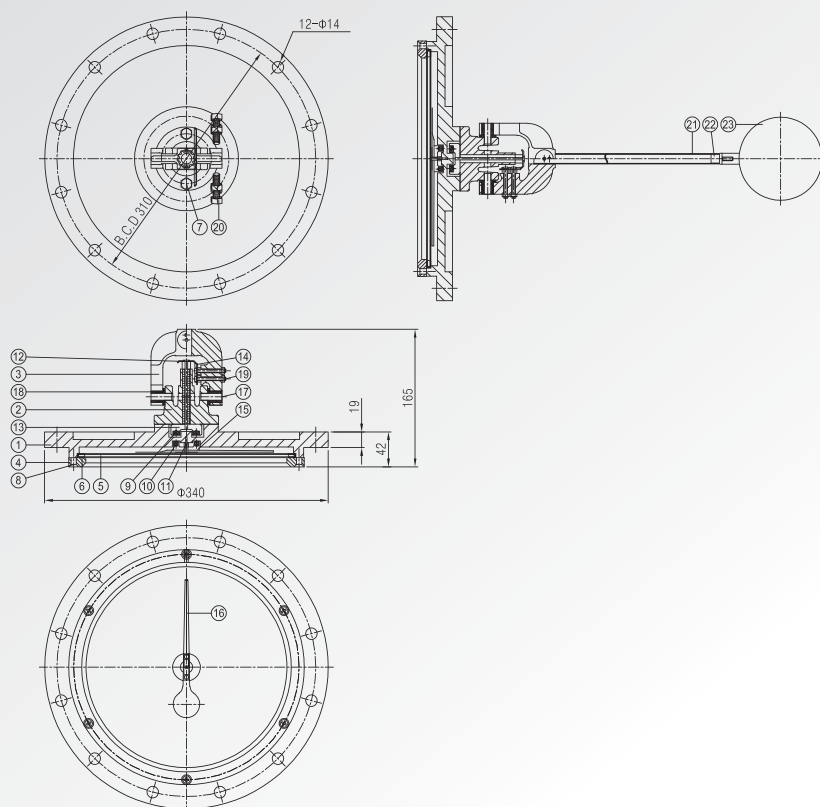
△					
△					
△	2006.07.12	REVISED FOR INFORMATION			
REV. NO.	DATE	REVISION DESCRIPTION	DRAWN	CHECKED	REVIEWED
<b>PETROL, KO</b> 배유 밸브 ASSEMBLY DRAWING					
DRAWING NO. FDV-001			REV. 개수 0		
MODEL 모델명 FDV	SIZE 크기 100A	PAGE 페이지 1 / 1	SCALE 배 NONE		



# TANK LEVEL GAUGE



MODEL NUMBER	PKA
MANUFACTURER	PETROL,KO
AMOUNT	1 EA
MODEL NAME	TANK LEVEL GAUGE
SOURCE	PETROL,KO



BILL OF MATERIAL			
NO.	PART NAME	MATERIAL	Q.TY
1	BODY	ALUMINUM CASTING	1
2	COVER	ALUMINUM CASTING	1
3	SWING YOKE	ALUMINUM CASTING	1
4	GLASS GUIDE	ALUMINUM	1
5	GLASS	GLASS	1
6	GLASS PACKING	RUBBER	1
7	COVER BOLT	STS 304	2
8	GLASS GUIDE BOLT	STS 304	6
9	TOP GEAR MAGNETIC	MAGNETIC	2
10	ARROW PLATE MAGNETIC	MAGNETIC	2
11	SPRING PIN	STS 304	1
12	TOP GEAR PLATE	STS 304	1
13	MAGNETIC GUIDE BAR	CARBON STEEL	1
14	SIDE GEAR PLATE	STS 304	1
15	ARROW MAGNETIC GUIDE	CARBON STEEL	1
16	ARROW MARK	ALUMINUM	1
17	YOKE PIN	ALUMINUM	1
18	YOKE PIN GUIDE	TEFLON	1
19	SIDE GEAR PLATE BOLT	STS 304	2 SET
20	STOPPER BOLT	STS 304	2 SET
21	TUBE	STS 304	1
22	TUBE BOLT	STS 304	1
23	BALL FLOAT	STS 304	1

## NOTES

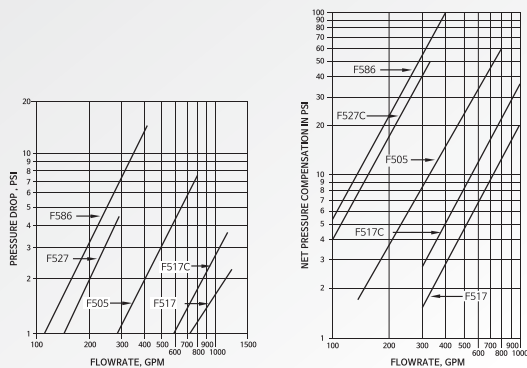
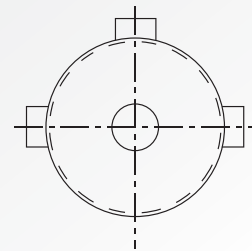
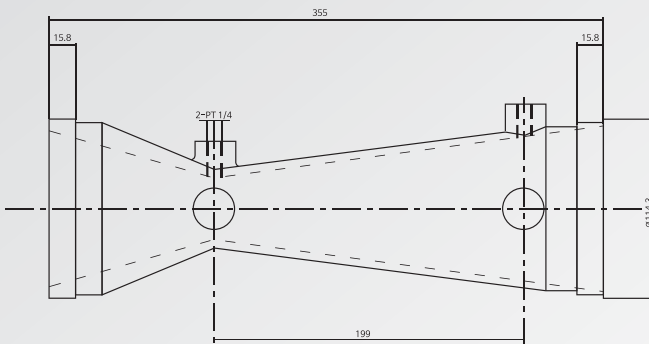
1. ALL DIMENSIONS ARE MILLIMETERS UNLESS OTHERWISE SPECIFIED.

△					
0	2008.08.10	ISSUED FOR INFORMATION			
REV. NO.	DATE	REVISION DESCRIPTION	DRAWN	CHECKED	REVIEWED
<b>PETROL, KO</b> TANK LEVEL GAUGE ASSEMBLY DRAWING					
DRAWING NO. TLG-001			REV. 개수 0		
MODEL: 모델명 TLG	SIZE: 크기 -	PAGE: 페이지 1 / 1	SCALE: 척도 NONE		



## VENTURI

MODEL NUMBER	PKA
MANUFACTURER	PETROL,KO
AMOUNT	1 EA
MODEL NAME	VENTURI
SOURCE	PETROL,KO



### NOTE

1. 일반 요파기 : CO.3
2. 일반 가공 공차 :  $\pm 0.2$
3. 지시 없는 ROUND : R0.5
4. ( ) 안의 치수는 참고 치수임.
5. 주물 기본 두께 : 9 "A" mm

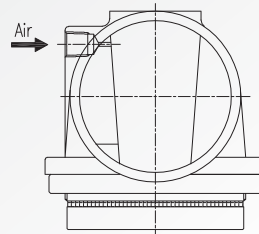
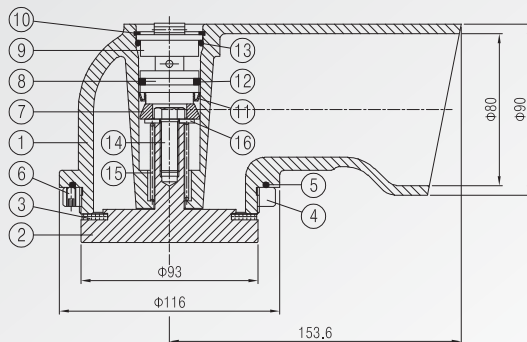
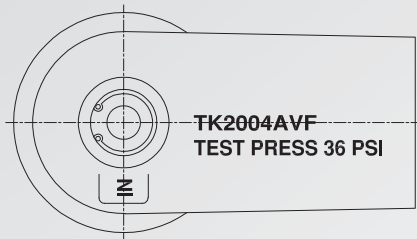
REV. NO.	DATE	REVISION DESCRIPTION	DRAWN	CHECK	REVIEWED	APPROVED
	2008.07.12	오토캐드 일러 재작성				

PRODUCT NAME 제품명	Venturi	PETROL, KO	
MODEL 모델명	MATERIAL 재료 ALUMINUM	TITLE 부품명 BODY	
SIZE 크기 100A	SCALE 척도 1/3	DRAWING NO. 도면 번호 MS-001-01	REV. 0
PROJECTION 방위	THIRD ANGLE PROJECTION		

# CUMMING VALVE



MODEL NUMBER	PKA
MANUFACTURER	PETROL,KO
AMOUNT	1 EA
MODEL NAME	CUMMING VALVE
SOURCE	PETROL,KO



BILL OF MATERIAL			
NO.	PART NAME	MATERIAL	Q.TY
1	BODY	ALUMINUM CASTING	1
2	DISC RETAINER	ALUMINUM CASTING	1
3	DISC	NBR	1
4	BOTTOM RING	CARBON STEEL	1
5	BOTTOM RING O-RING	NBR	1
6	SET SCREW	CARBON STEEL	1
7	TEFLON RING	TEFLON	1
8	LOWER TEFLON PISTON	TEFLON	1
9	UPPER TEFLON PISTON	TEFLON	1
10	STOPPER RING	CARBON STEEL	1
11	ENERGIZED SEAL	TEFLON + CARBON	1
12	QUAD RING	NBR	1
13	UPPER PISTON O-RING	NBR	1
14	SPRING BOLT	STS 304	1
15	SPRING	STS 304	1
16	SPRING SEAT WASHER	STS 304	1

REV. NO.	DATE	REVISION DESCRIPTION	DRAWN	CHECKED	REVIEWED	APPROVED
1	2008.06.18	ISSUED FOR INFORMATION				
<div> <b>PETROL, KO</b> </div> <div> <b>VAPOR RECOVERY VALVE</b>  <b>ASSEMBLY DRAWING</b> </div> <div> DRAWING NO. VRV-001  SCALE: NONE </div>						
MODEL	SEE PAGE	PAGE	SCALE			
VRV	80A	1 / 1	NONE			

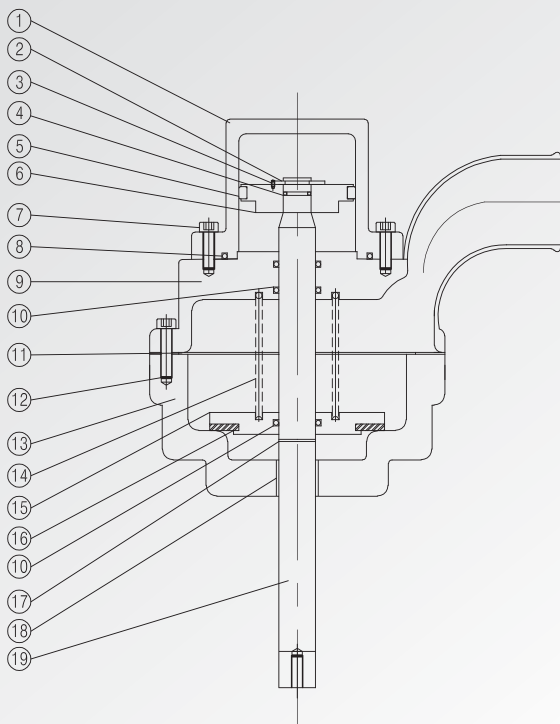
## NOTES

1. ALL DIMENSIONS ARE MILLIMETERS UNLESS OTHERWISE SPECIFIED.



## VAPOR VENT


MODEL NUMBER	PKA
MANUFACTURER	PETROL,KO
AMOUNT	1 EA
MODEL NAME	VAPOR VENT
SOURCE	PETROL,KO



### NOTES

1. ALL DIMENSIONS ARE MILLIMETERS UNLESS OTHERWISE SPECIFIED.

BILL OF MATERIAL				
NO.	PART NAME	MATERIAL	Q.TY	REMARK
1	실린더 캡	알루미늄 합금	1	
2	스냅링	스텐	1	
3	볼트	SS400	4	부드볼트 M4X10
4	오링	엔비알	1	P14
5	쿼터링	바이론	1	QU330
6	실린더	CARBON STEEL	1	
7	볼트	SS400	4	육각렌지 M8X25
8	오링	엔비알	1	G70
9	하우징	알루미늄 합금	1	
10	오링	바이론	3	G20
11	패킹	비석면	1	
12	볼트	SS400	4	육각렌지 M8X30
13	바디	알루미늄 합금	1	
14	스프링	스텐	1	39X45X100 권수6
15	디스크	알루미늄	1	
16	디스크 패킹	바이론	1	3.2X65X95
17	스냅링	스텐	1	53.35X5.33
18	붓싱	분말야금	1	20X10
19	사루트	스텐	1	
20				
21				
22				

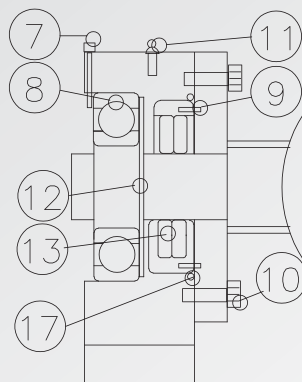
△					
△					
△	2008.06.06	ISSUED FOR INFORMATION			
REV. NO.	DATE	REVISION DESCRIPTION	DRAWN	CHECKED	REVIEWED
 <b>PETROL, KO</b>					
TITLE 명칭					



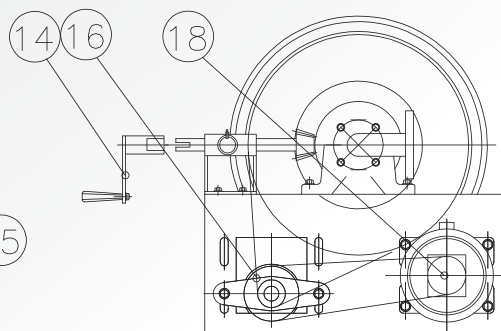
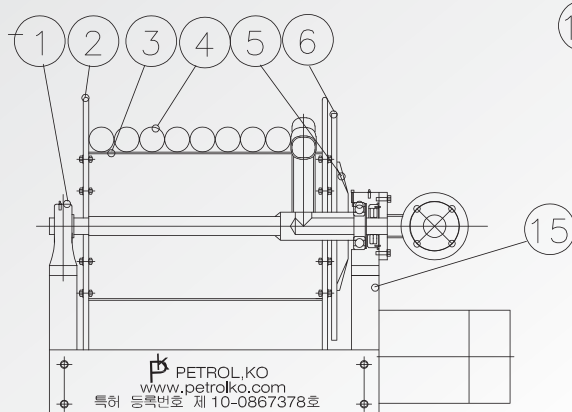
# PETROLKO HOSE REEL



MODEL NUMBER	PKA
MANUFACTURER	PETROL,KO
AMOUNT	1 EA
MODEL NAME	PETROLKO HOSE REEL
SOURCE	PETROL,KO



NO	PARTS NAME	SIZE&SPEC	MATERIAL	Q'TY	REMARK
1	리프터링	PH206	MATERIAL	1	
2	드럼가이드	SS41	SS41	2	
3	인사이드트랩		SS41	1	
4	호스	1 1/2"	내유성고무	1	
5	배설기어		SS41	1	
6	채인기어	#35*145	SS41	1	
7	편지볼트	M6*35	SS400	4	
8	네어링	#6909	SS400	1	
9	무두볼트	M4*10	SS400	2	
10	편지볼트	M8*30	SS400	1	
11	구리스넛	M6		3	
12	축용C형임승링	45	SS41	1	
13	패드링	QU326	연비알	2	
14	편들		SS41	1	
15	브레이크		SS41	1	
16	스포락켓	#35*12*42	SS41	1	
17	오링	AN230	연비알	1	
18	모터	24V		1	



1 2 3 4

APPROVAL	DATE	<b>PETROL, KO</b>	PROJECT NAME	TITLE	REV.
DRAWN BY:					
CHECKED BY:		HOSE REEL	SIZE: A3	DWG. NO. PK-HL-2000	SHEET: 01
APPROVED BY:					
QAI:		SCALE: N/S			
MFRC:					





660 MECHA ZONE ,117, Hwanggeum-ro, Yangchon-eup,  
Gimpo-si, Gyeonggi-do, Korea  
Tel: +82-31-999-6345 / Fax: +82-31-999-6346  
[www.petrolko.com](http://www.petrolko.com) / [petrolko.hanmail.net](mailto:petrolko.hanmail.net)